

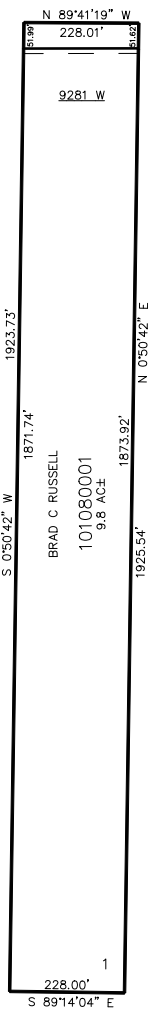
PART OF THE N.E.1/4, OF SECTION 20, T.6N., R.3W., S.L.B. & M.
RUSSEL'S RUN

TAXING UNIT: 389

IN WEBER COUNTY
SCALE 1" = 200'

SEE PAGE 38

900 SOUTH ST



SEE PAGE 41

SEE PAGE 41

SEE PAGE 41

10' UTILITY & DRAINAGE EASEMENTS EACH
SIDE OF PROPERTY LINES AS INDICATED
BY DASHED LINES EXCEPT AS OTHERWISE
SHOWN.

FOR COMPLETE ENG DATA SEE
ORIGINAL DEDICATION PLAT IN
BOOK 60, PAGE 23 OF RECORDS.